



Com1 IpPbx ... A proud Indian product that can challenge the best in business for its features, simplicity, & innovation.

Com1 IpPbx ... 100% pure Ip Switch, a brainchild of an Indian technocraft with over 3 decades of telecom business experience.

Why Com1 ? :

Customer Care: Customers are provided with a mobile APP that is integrated with an accountable and transparent ticketing system. There is a structured and regular training program conducted to dealers as well as customers to get the best out of our product.

Hardware: Customers are always at the mercy of the dealers, with respect to post warranty support, with the 'Proprietary Hardware' of every manufacturer while **Com1 IpPbx** uses the normal computer or server as its hardware that removes dealer dependency on hardware support.

End Terminals: Most other manufacturers, **either** do not support connecting 'Open Source SIP terminals' or discourage the same with unjustified arbitrary license charges. **Com1 IpPbx** can connect with any Open Source SIP terminals with no license charges. To complicate further the incompatibility of 'Proprietary Terminals with any other EPABX, makes the customers to either discard the investment or live along with its perennial issues and shortcomings.

'Obsolete' Technology: While the communication world is moving away from TDM to IP technology, the reputed & branded manufacturers are either choosing to quit the industry or trying to sell products with obsolete technology by backward integration of a broker card (VOIP Card) in between.

License Cost: Gullible customers who put **brand above facts** not only end up investing on products that are obsolete but also end up paying Unjustified arbitrary license cost for migrating to new Ip Technology. Licenses for SIP Trunks & SIP extensions are highly unjustified and arbitrary which are available for free in abundance in Com1 IpPbx.

Expandability:

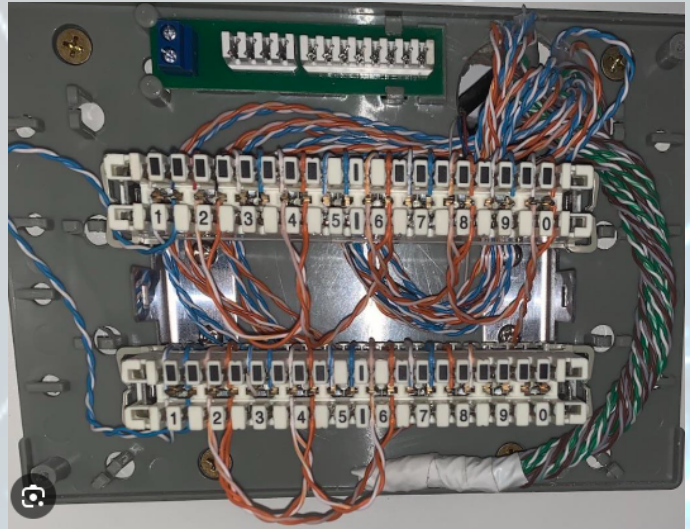
"Extension is just a Number" to configure with no hardware, can expand from 100 to 6000 as you grow

- Adding "Trunks" is adding an appropriate gateway in the network. Unlimited in size & options. SIP, PRI, GSM, Volte & Analog Trunks
- Adding **Analog Extensions** is just Adding FXS & configuring in the network
- Your Investment today is your "Final Investment" on EPABX irrespective of size you grow in the future



Termination:

- 80% EPABX complaints are due to cabling, gets eliminated making absolutely trouble free
- In large campus distribute & Connect FXS with network cabling than clustering multi pair cable
- As this can effectively use your data network for Ip Phones reduces the cabling need and can be better managed with ease



In Built Special Features :

- Voice Logger
- Call Billing Software
- Voicemail
- Voicemail to Email
- Sip Trunk Connectivity (No Licencing Cost)
- Multi level IVR

Optional Special Features :

- Inbound Call Centre Solution (ACD)
- Outbound Call Centre Solution (Predictive, Progressive, Preview)
- Outbound Voice Blasting (Survey)
- CRM Integration (including but not limited to Zoho, Leadsquared, SAP, Salesforce)
- Tally Integration
- SMS Integration
- Whatsapp Integration
- EMail Integration

Partial Customer List :

- Starhealth Insurance Limited (All India Order)
- Bajaj Finserv (All India Order)
- Larsen & Toubro (Multi Location Order)
- Zebronic (Corporate Office Chennai)
- Apollo Hospitals (Kolkata)
- TNEB Call Centre Chennai
- Cameo Corporate Services (Chennai & Bangalore)



<https://com1pbx.com>

Your Local Partner: